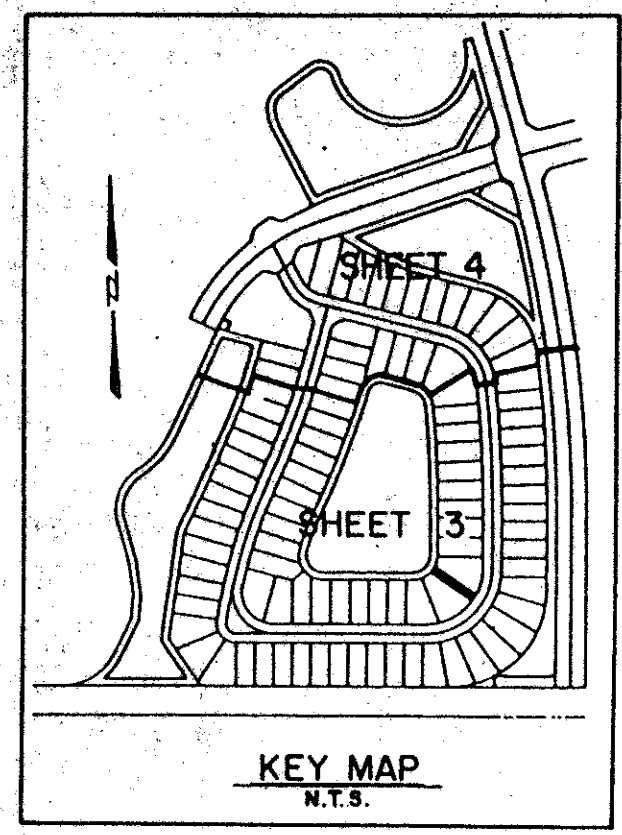


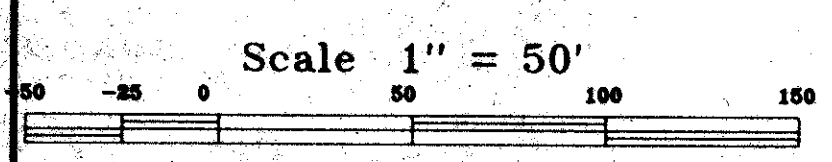
0270-017

# ABERDEEN - PLAT NO. 15

A PORTION OF A (P.U.D.)  
LYING IN SECTION 16, TOWNSHIP 45 SOUTH, RANGE 42 EAST  
BEING A REPLAT OF A PORTION OF ABERDEEN - PLAT NO. 2 AS RECORDED IN PLAT  
BOOK 55, PAGES 11 THRU 22, PUBLIC RECORDS OF PALM BEACH COUNTY, FLORIDA.  
SHEET 3 OF 4  
MAY, 1992

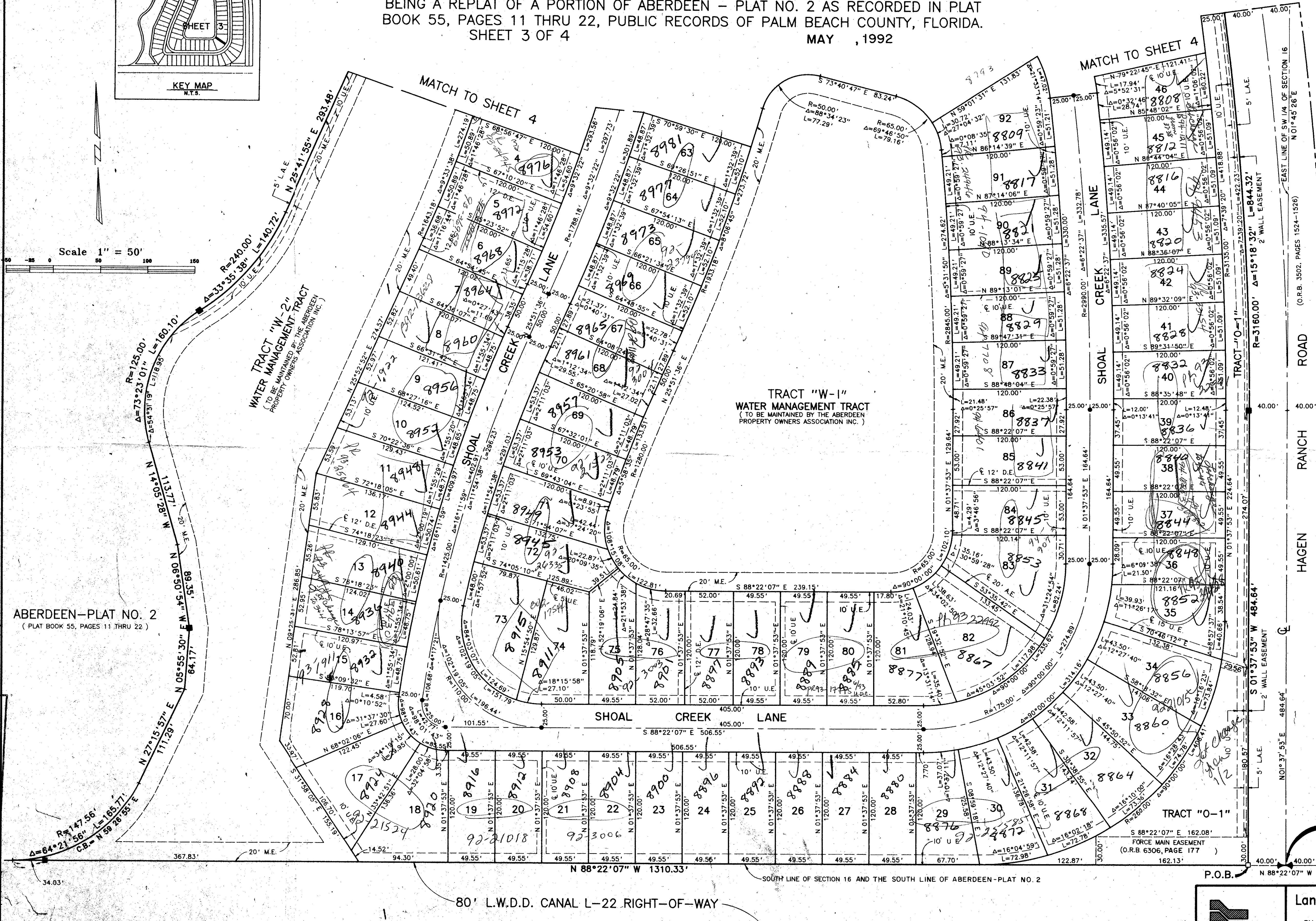


STATE OF FLORIDA  
COUNTY OF PALM BEACH  
This Plat was filed for record at  
M. this day of 1992  
and duly recorded in Plat Book No. \_\_\_\_\_  
on Page \_\_\_\_\_  
Millon T. Bauer, Clerk of the Circuit Court  
By \_\_\_\_\_ D.C.



ABERDEEN-PLAT NO. 2  
(PLAT BOOK 55, PAGES 11 THRU 22)

Subdivision of ABERDEEN PLAT 15  
BOOK 69 PAGE 65  
FLOOD MAP #185A  
QUAD #44  
SE  
PUD NAME  
1314/1714  
SOMLO  
TAX-442  
ZIP CODE 33437



PET. 80-153  
ALLOC. #0001  
COLLECT

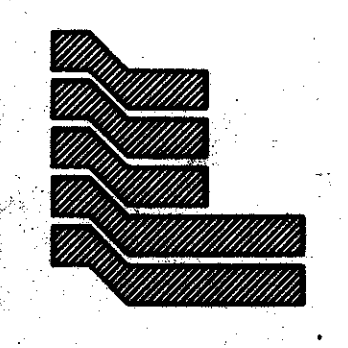
0270-017

09/05

P.O.C.  
S.E. CORNER OF THE S.W.  
QUARTER OF SECTION 16  
AS SHOWN ON ABERDEEN-  
PLAT NO. 2

Landmark Surveying & Mapping Inc.  
1850 FOREST HILL BOULEVARD  
PH. (407)433-5405 SUITE 100 W.P.B. FLORIDA

ABERDEEN - PLAT NO. 15



PARCEL F